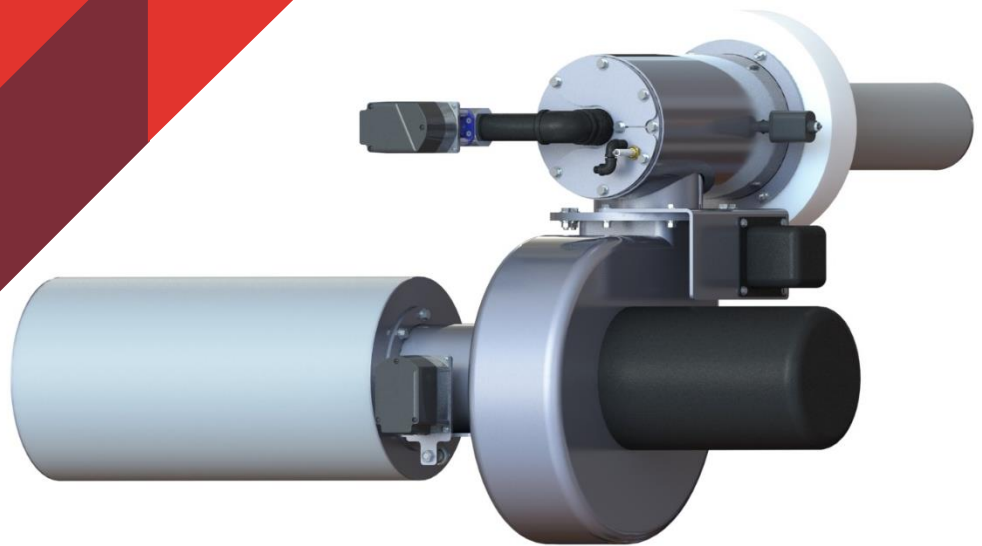


Environmental Burner Solutions



MODEL A BURNER

INDUSTRIAL BURNER DESIGN / ENVIRONMENTAL BURNER SOLUTIONS / AFTERMARKET PARTS / SERVICE

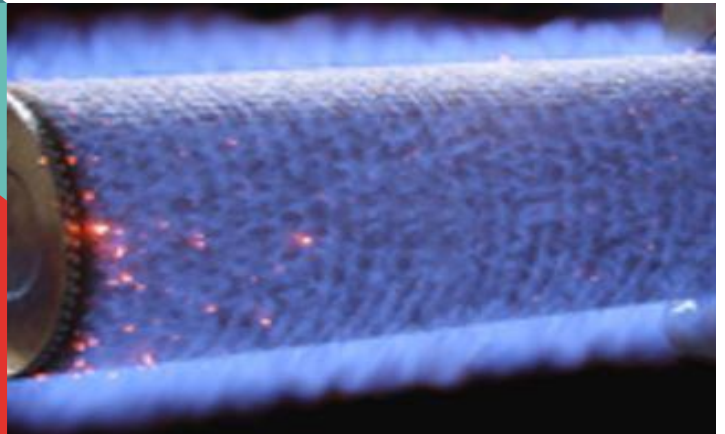
www.alpha-combustion.com



ENERGY EFFICIENCY LOW EMISSION HIGH QUALITY

ALPHA COMBUSTION

www.alpha-combustion.com

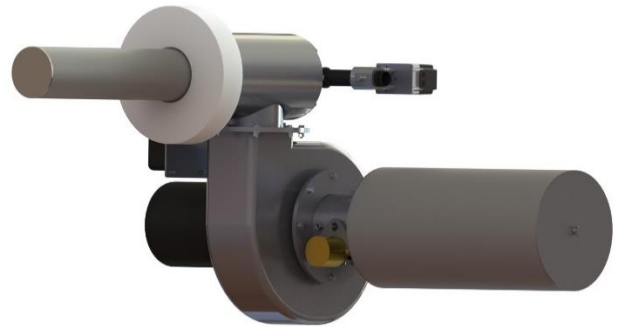


MODEL A

Alpha Combustion **Model A** Ultra-Low NO_x Package Burner utilizes surface stabilized combustion and achieves Sub 9 ppm NO_x emissions and near zero CO emissions when corrected to 3% O₂.

The burner is ideal for fire-tube, water-tube, cast-iron and condensing boilers applications. Its small footprint and modular design make it ideal for retrofit locations, where space or speed of installation is of concern.

For added efficiency gains the burner can be operated with Flue Gas Recirculation (FGR).



HEAT RELEASE RANGE

1.0 to 21 mmbtu/hr (HHV)

Ideal for heaters with input:

24HP to 500HP

FUEL

- Natural Gas (NG)
- Propane (LP)
- Propane Air Mix (LA)
- Town Gas (TG)
- Digester Gas (DG)

BURNER TURNDOWN

Up to 6 to 1 when firing NG

EXCESS AIR RANGE

No FGR Applications:
9 ppm (17mg) NO_x at 60%
excess air level.

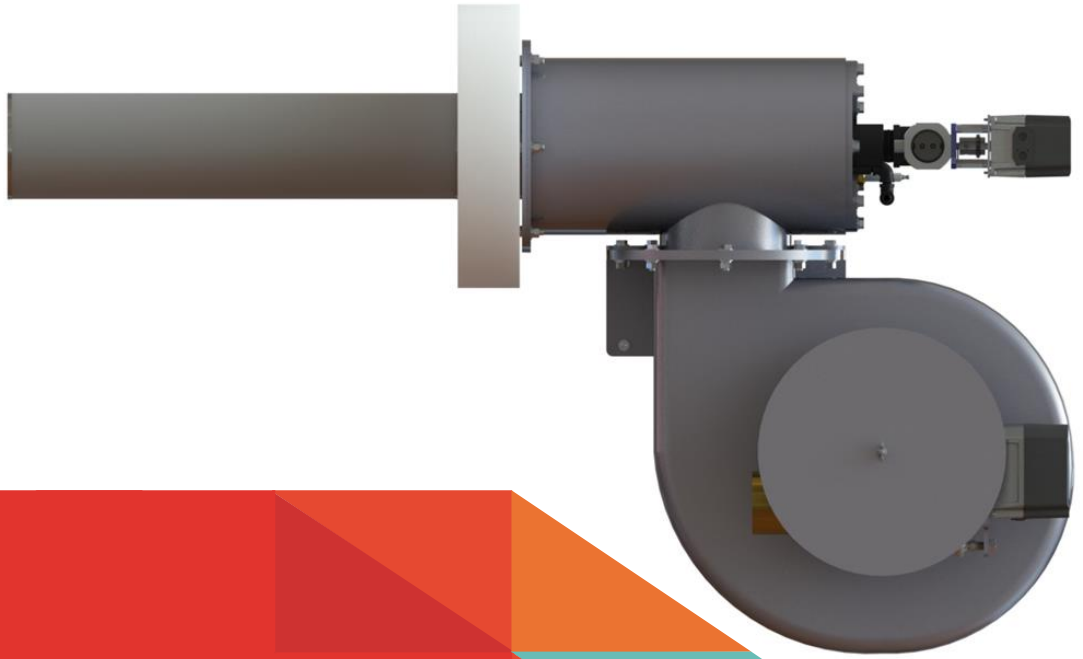
With FGR
9 ppm (17mg) NO_x at 20%
excess air level.

BURNER MOUNTING OPTIONS

- Horizontal
- Vertical
- Up or down firing.

CONTROL PANEL MOUNTING OPTIONS

- Side of the burner above the blower motor (standard)
- Remote panel (option)

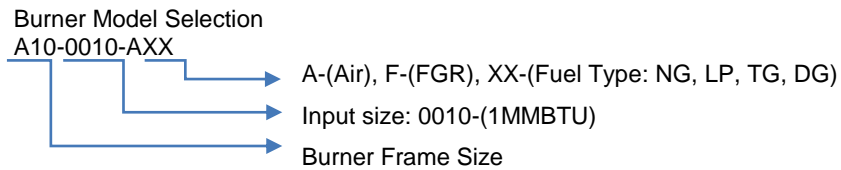


ALPHA COMBUSTION

www.alpha-combustion.com

Burner Model	Frame Size	Burner size	Boiler HP 80% Eff.	Blower Motor HP	Furnace Pressure [inch W.C.]	Standard Gas Train Size	Inlet Gas Pres. Required [PSI]
		mmbtu/hr HHV					
A10-0010-AXX	10	1.0	24	1.5	4	1	2
A10-0015-AXX	10	1.5	36	2	4	1	2
A10-0020-AXX	10	2.0	48	2	4	1.5	2
A10-0030-AXX	10	3.0	71	3	4	1.5	2
A14-0042-AXX	14	4.2	100	5	4	1.5	2
A14-0053-AXX	14	5.3	125	5	4	1.5	2
A14-0063-AXX	14	6.3	150	7.5	4	1.5	2
A22-0084-AXX	22	8.4	200	7.5	6	2	2
A22-0105-AXX	22	10.5	250	10	6	2	2
A22-0126-AXX	22	12.6	300	10	6	2	3
A22-0147-AXX	22	14.7	350	15	6	2	3
A30-0168-AXX	30	16.8	400	20	8	2.5	3
A30-0210-AXX	30	21.0	500	20	8	2.5	3

Gas input is based on natural gas with 1,000 Btu/cu.ft. and 0.60 gravity.
 Motor HP is based on altitude of 2,000 feet or less. If altitude > 2,000 feet and < 8,000 feet, derate capacity 4% per 1,000 feet over 2,000. Consult Alpha Combustion for higher altitudes.



BURNER GENERAL DIMENSIONS

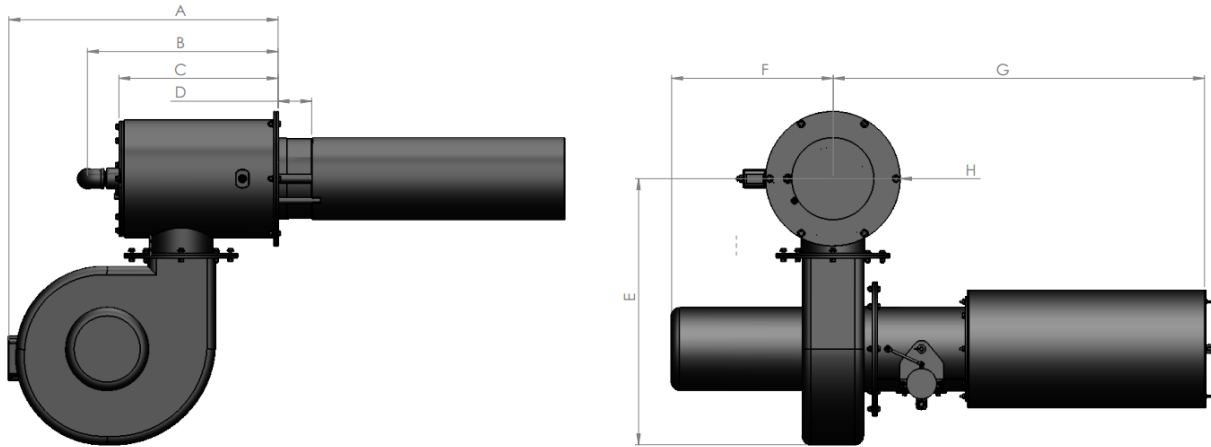


FIGURE 1 GENERAL BURNER LAYOUT

Burner	A	B	C	D	E	F	G	H
Frame Size	Inch (mm)	Inch (mm)	Inch (mm)	Inch (mm)	Inch (mm)	Inch (mm)	Inch (mm)	Inch (mm)
10	32 (813)	23 (584)	19 (482)	4 (102)	28 (711)	19.5 (495)	42 (1067)	12 (305)
14	32 (813)	23 (584)	19 (482)	4 (102)	32 (813)	19.5 (495)	44.5 (1130)	16 (406)
22	56 (1422)	48 (1219)	43 (1092)	8 (203)	51 (1295)	27 (686)	56 (1422)	26 (660)
30	64 (1626)	52 (1321)	46 (1168)	8 (203)	62 (1575)	32 (813)	60 (1524)	34 (864)

Note:

- Dimension D and G can be changed to fit application requirements.
- Burner can be rotated with blower above the center-line.
- All dimensions are for layout purposes only, all dimensions must be confirmed for construction.



Contact Information:

001-918-851-1751
sales@alpha-combustion.com
www.alpha-combustion.com



1305 N. Louisville Ave
Tulsa, OK 74115

918-851-1751
www.alpha-combustion.com
sales@alpha-combustion.com